

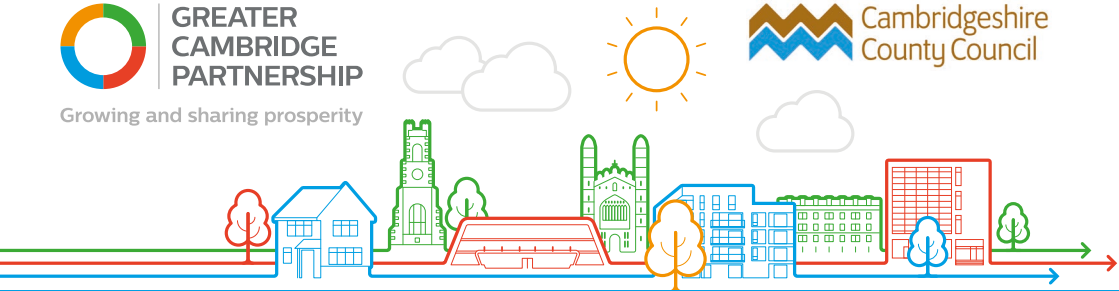


**GREATER
CAMBRIDGE
PARTNERSHIP**

Growing and sharing prosperity



**Cambridgeshire
County Council**



GCP TRANSPORT RESPONSE TO COVID-19 TRAFFIC MANAGEMENT MEASURES IN CAMBRIDGE

NIGHTINGALE AVENUE

HAVE YOUR SAY

The Greater Cambridge Partnership (GCP) is working with Cambridgeshire County Council (CCC) to support efforts for people to walk and cycle around Greater Cambridge during the Covid-19 pandemic, encouraging more journeys on foot or by bike, and supporting social distancing.

A series of experimental schemes were implemented in August this year which closed various streets to through traffic movements. These measures could offer longer-term benefits by providing lower traffic routes for walking and cycling which could be made permanent at the end of the experiment. One of these trial measures is on Nightingale Avenue.

The experimental traffic restrictions can be in place for a maximum of 18 months. During the first 6 months of the trial, anyone can comment on or object to making the experiment permanent.

Other representations can be submitted at any time during the trial. All comments, representations and objections will be considered prior to making a final decision on whether the experiment is made permanent, modified in some way or removed.

To get feedback and inform a final decision about the schemes, GCP is commencing a 6 week period of consultation on the effects of the experimental traffic restrictions.

To have your say, please fill in the survey online at **www.greatercambridge.org.uk/etro-consultation**.

The consultation runs from **midday Monday 9th November and closes at midday on Friday 18th December 2020.**

You can request a printed survey by contacting us using the details below.

GET IN TOUCH

 **consultations@greatercambridge.org.uk**

 **01223 699906**

 **www.twitter.com/GreaterCambs**

 **www.facebook.com/GreaterCam**

WHERE CAN I GET MORE INFORMATION?

More information on the experimental closure and other experimental measures being implemented by the GCP on behalf of the County Council is available on the GCP website: www.greatercambridge.org.uk/experimental-traffic-orders

If you want to keep in touch with any updates on the experimental traffic regulation orders, please visit www.greatercambridge.org.uk/subscribe to be added to our mailing list.

