

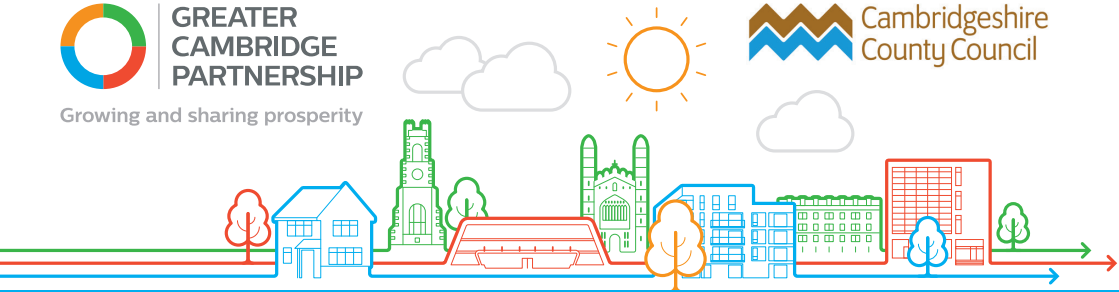


**GREATER  
CAMBRIDGE  
PARTNERSHIP**

Growing and sharing prosperity



**Cambridgeshire  
County Council**



**GCP TRANSPORT RESPONSE TO COVID-19  
TRAFFIC MANAGEMENT MEASURES IN CAMBRIDGE**

**STOREY'S WAY**

**WHAT'S HAPPENING?**

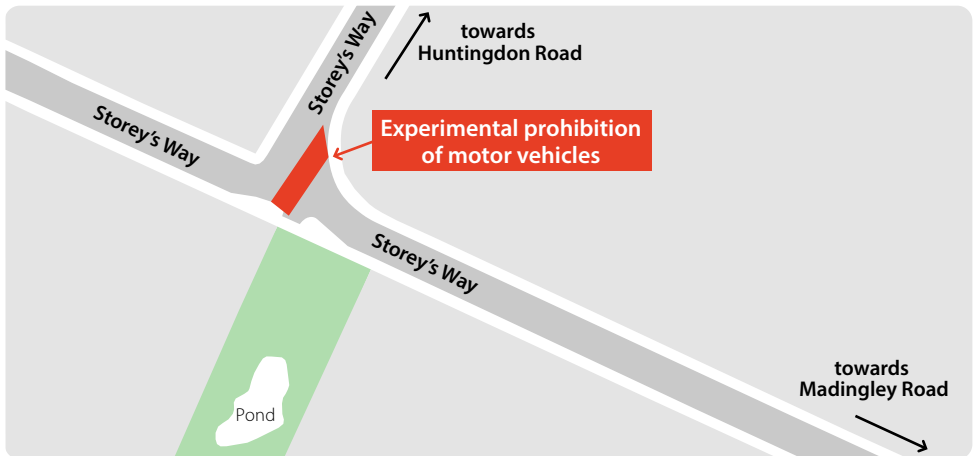
Cambridgeshire County Council is making various changes to its highway network which will reallocate road-space to walking and cycling to help the recovery from the Covid-19 pandemic and support social distancing.

As people start to travel again, and with limited space available on our roads, we need more people to walk and cycle to create space for social distancing and avoid congestion and a return to high levels of air pollution. If more people are able to complete their journeys by walking and cycling, then our transport

network will be able to support recovery by keeping congestion low and making sure space on public transport is available for those who need to travel this way.

The Greater Cambridge Partnership (GCP) is working with the County Council to introduce a series of experimental measures to make it easier and safer for people to cycle and walk around Cambridge, by closing various streets to through traffic movements on an experimental basis. These measures could offer longer-term benefits by providing lower traffic routes for walking and cycling which could be made permanent at the end of the experiment.

**One of the roads included in the experimental scheme programme is Storey's Way.**



## HOW AND WHERE WILL THE ROAD BE CLOSED?

A barrier will be installed to prevent all motor vehicles from passing through the existing width restriction in Storey's Way. An opening will be provided to cater for cycle movements. This will prevent through traffic movements between Huntingdon Road and Madingley Road to reduce traffic levels and improve conditions for walking and cycling.

Motor vehicle access will be maintained to all properties in Storey's Way either from Huntingdon Road or Madingley Road.

Signing will also be provided to give effect to and advise of the road closure.

## WHEN IS THIS HAPPENING?

An experimental traffic regulation order has been made to close the road which will come into operation on **12th August 2020** and barriers and associated signing to implement the closure point will be installed soon after. Further details of the exact date when the physical measures will be installed will be available on the GCP website once confirmed with contractors.

## WHY IS THE CLOSURE EXPERIMENTAL?

Introducing the closure point using an experimental traffic regulation order allows installation more quickly in response to the Covid-19 pandemic. We will be consulting widely on the effects of the closure once installed and during the first 6 months of the trial the public will have the opportunity to comment on its impact and to lodge any objections to making the measures permanent. The trial period can last for up to a maximum of 18 months before which decisions need to be made on whether to make permanent, amend or discontinue the experimental closure.

## WHAT EFFECTS WILL THE MEASURE HAVE?

Removing through traffic movements will reduce traffic levels in the area, creating more space for walking and cycling, supporting social distancing. Access to all properties by motor vehicle, including for blue badge holders, will be maintained either side of the closure point but the routes used may be longer and in some cases less convenient.

Where planned access is required for large vehicles that may have difficulty in entering/leaving the area, such as for moving house, arrangements can be made with the County Council in advance to temporarily remove a locked bollard at the closure point to allow for this. Contact details as follows:

Email:

**[parkingcontrol@cambridgeshire.gov.uk](mailto:parkingcontrol@cambridgeshire.gov.uk)**

Tel: **01223 727915**

## WHERE CAN I GET MORE INFORMATION?

More information on the experimental closure and other experimental measures being implemented by the GCP on behalf of the County Council is available on the GCP website: **<https://www.greatercambridge.org.uk/experimental-traffic-orders>**

If you want to keep in touch with any updates on the experimental traffic regulation orders, please visit **[www.greatercambridge.org.uk/subscribe](http://www.greatercambridge.org.uk/subscribe)** to be added to our mailing list.

## GET IN TOUCH

 **[contactus@greatercambridge.org.uk](mailto:contactus@greatercambridge.org.uk)**

 **0345 0455212**

 **<https://twitter.com/GreaterCams>**

 **<https://www.facebook.com/GreaterCam>**

 **Cambridgeshire County Council,  
Business Intelligence Service, OCT 1224,  
Castle Hill, Cambridge CB3 0AP**

(we have limited capacity to receive post at the present time, so please only post a response to us if this is the only way you are able to respond)